



your
GATEWAY
to a **SMARTER**
FUTURE

VISITOR INFORMATION

26TH INTERNATIONAL SHEET METAL
WORKING TECHNOLOGY EXHIBITION

25 – 28 OCTOBER 2022
HANOVER, GERMANY

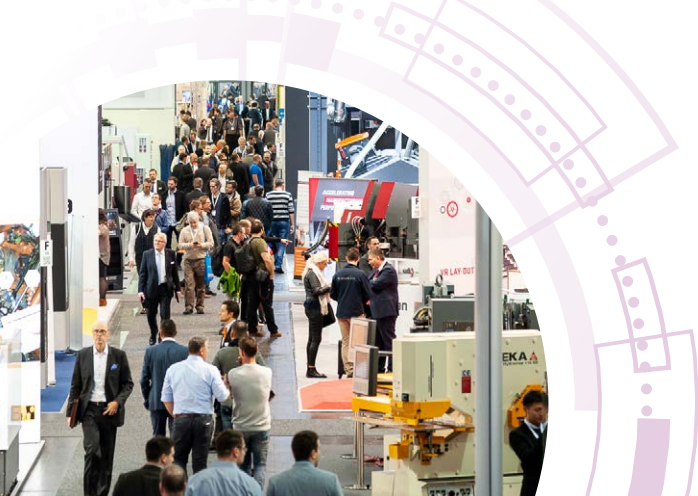
EuroBLECH 2022

YOUR GATEWAY TO A SMARTER FUTURE

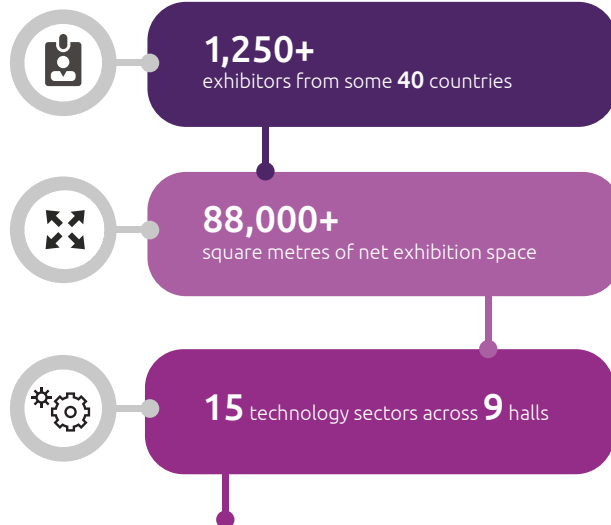
At EuroBLECH, sheet metal working professionals from all over the world get together to discover the latest systems and machinery for smart manufacturing, and discuss solutions and industry trends. EuroBLECH has always been the key marketplace but after a compulsory break, this year's exhibition is more important than ever for the industry and marks the long-awaited comeback of unrivalled business opportunities and face-to-face networking.

This year's edition of the world's leading exhibition for the industry will focus on intelligent solutions and the ongoing automation and digitalisation of the manufacturing chain to enable an increase in output and efficiency. Experience machines, systems and solutions for networked manufacturing through live demonstrations and expert guidance, open up new business connections and make full use of networking opportunities. Exhibitors from all over the world will be showcasing their innovations at the world's largest exhibition centre in Hanover.

Enter your gateway to smart sheet metal working and shape the future of the industry, at this year's EuroBLECH!



WHY VISIT EUROBLECH 2022?



More than **90%** of visitors were highly satisfied with the range of products and services at the exhibition*

96% of visitors would recommend EuroBLECH to their colleagues*



More than **a quarter** of EuroBLECH visitors do not visit any other trade shows*

* Results of last edition's visitor survey

WHY VISIT EUROBLECH 2022?



It is the **world's largest exhibition** for the sheet metal working industry



With exhibitors in 15 different technology sectors, it covers the **entire sheet metal working technology chain**



It is a barometer depicting the **latest technological trends** in the industry



It attracts **small and medium companies as well as large enterprises** who are looking to invest in a variety of different manufacturing solutions in sheet metal working

A MUST-ATTEND EVENT FOR TOP INDUSTRY PROFESSIONALS

As the largest sheet metal working technology exhibition, EuroBLECH is visited by top industry professionals at all management levels in small, medium and large companies.

The show attracts design engineers, production managers, quality managers, buyers, manufacturers, technical directors and experts from associations and R&D from the following industry sectors:



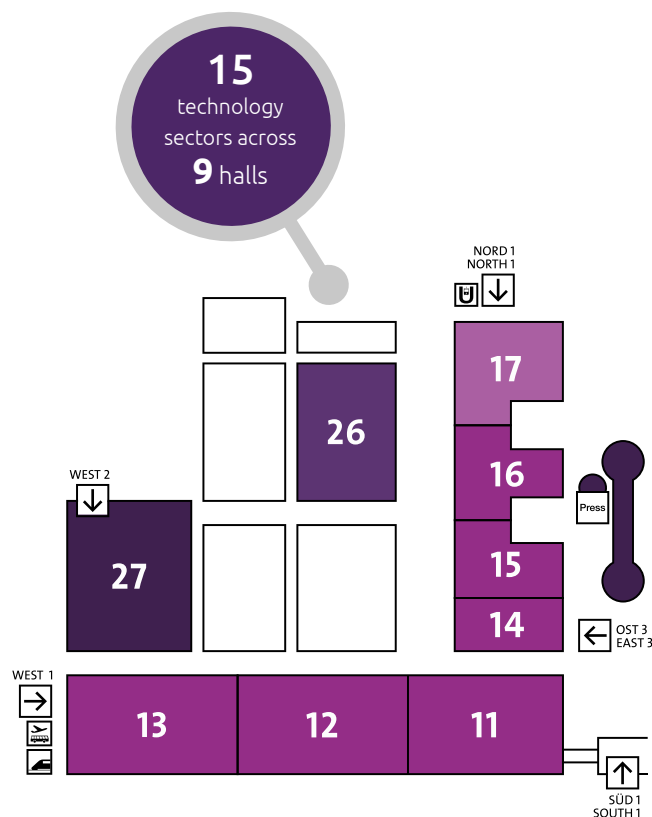
- Mechanical engineering
- Sheet metal products, components, assemblies
- Steel and aluminium construction
- Automotive industry and related suppliers
- Electrical engineering, appliances
- Heating, ventilation, air conditioning
- Renewable energy construction
- Electronics industry
- Rolling mills
- Iron and steel production
- Non-ferrous metal production
- Precision engineering, optics
- Medical technology
- Packaging
- Aerospace
- Shipbuilding



EXHIBITION PROFILE

EuroBLECH 2022 covers the entire sheet metal working technology chain, presenting 15 technology sectors across 9 halls:

TECHNOLOGY SECTORS BY HALL

[illegible]

- | | | | | | |
|---|--|---|---------------------|---|-----------------------------------|
|  | Entrance |  | Press Centre |  | Tram |
|  | Mack-Brooks Exhibitions Organisers' Office |  | Convention Centre |  | Railway Station: 'Messe/Laatzert' |
|  | Information (EBI) |  | Airport Shuttle Bus | | |

VISITOR INFORMATION HUB

PLAN YOUR VISIT

EXHIBITOR LIST

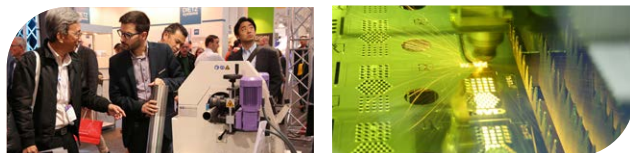
The EuroBLECH Exhibitor List tool helps you to effectively prepare your visit by finding the exhibitors and products most relevant to you.

ONLINE SHOW PREVIEW

The Online Show Preview provides an overview of the wide variety of innovations, technologies and systems on display at the event.

DOWNLOAD THE EUROBLECH APP

Get the official EuroBLECH mobile app for Android and iOS to guide you through your visit (available from September).



SAFETY AT THE EVENT

At EuroBLECH, we are all about connecting people, so the health and safety of our visitors, exhibitors and staff are of the utmost priority. Please check www.euroblech.com

TRAVEL & VISA INFORMATION

Visitors requiring a visa to travel are advised to start their preparation as early as possible. Further information is available in the Travel hub on the website.

VISITOR INFORMATION

VENUE

Hanover Fairground, Hanover, Germany

Halls 11, 12, 13, 14, 15, 16, 17, 26, 27

Entrances West 1, West 2, Nord 1, Ost 3, Süd 1

As the largest exhibition grounds worldwide, Hanover Trade Fair is the ideal venue for the world's leading Sheet Metal Working Technology Exhibition.

OPENING HOURS

Tuesday	25 October 2022	9.00 – 18.00
Wednesday	26 October 2022	9.00 – 18.00
Thursday	27 October 2022	9.00 – 18.00
Friday	28 October 2022	9.00 – 18.00

TICKETS

Entrance tickets for EuroBLECH 2022 are available at a discounted price via the [online ticket shop](#). Tickets can also be purchased on-site throughout the duration of the exhibition.

	Online	On-site
Day Ticket	€ 38	€ 48
Season Ticket	€ 65	€ 78
Student Day Ticket		€ 18*
Catalogue	€ 42**	€ 42

* On Friday, 28 October, entry is free for all students with a valid student ID.

** The catalogue voucher can be redeemed at the ticket counter at the entrances on-site.

Follow us

Organisers

Mack-Brooks Exhibitions
EuroBLECH 2022
Romeland House, Romeland Hill
St Albans, Hertfordshire
AL3 4ET
United Kingdom

Tel: +44 (0)1727 814 451

www.euroblech.com